

AMCHIT 1633

LUXURY RESIDENTIAL PROJECT



PROJECT BY



JEAN EL KHOURY
DEVELOPMENT

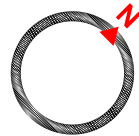


PROJECT LOCATION

Located in the heart of Amchit, a quiet residential area is created with a perfect location.

A few meters away from the main highway, the site is situated on a hill offering a stunning panoramic view upon the sea.

No matter what your needs are, **Amchit 1633** is definitely the place you are looking for.



OVERALL PERSPECTIVE



ELEVATION

WEST PERSPECTIVE

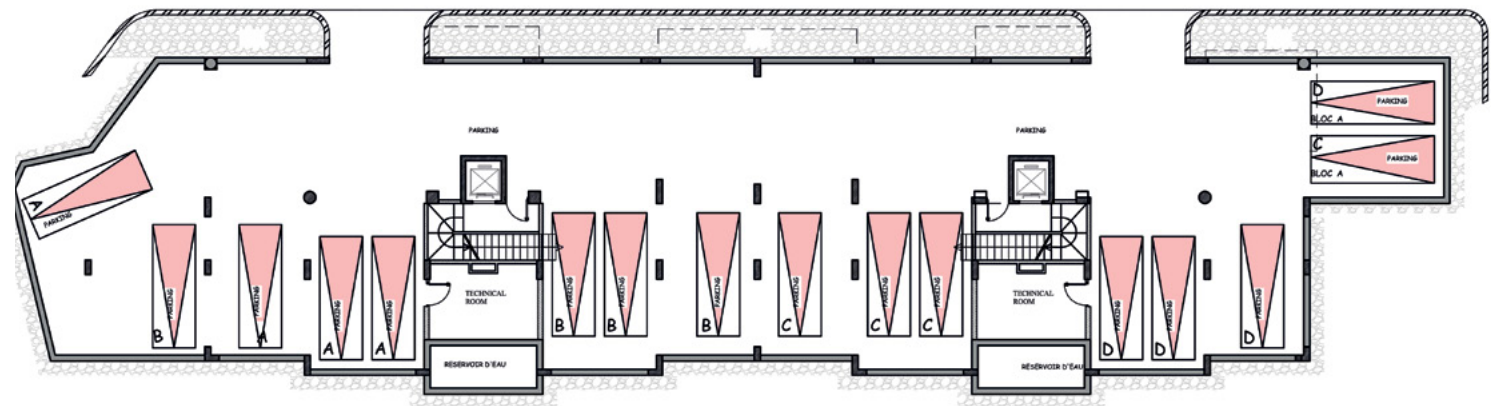
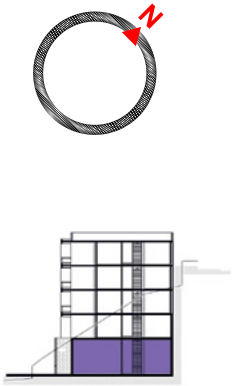


BLOCKA
WEST PERSPECTIVE



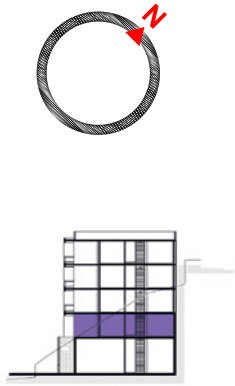
BLOCK A

SECOND BASEMENT



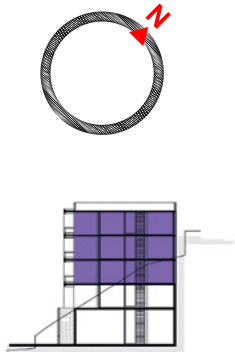
BLOCKA

FIRST BASEMENT



BLOCCA

TYPICAL FLOOR



BLOCK B
WEST PERSPECTIVE



BLOCK C
NORTH PERSPECTIVE



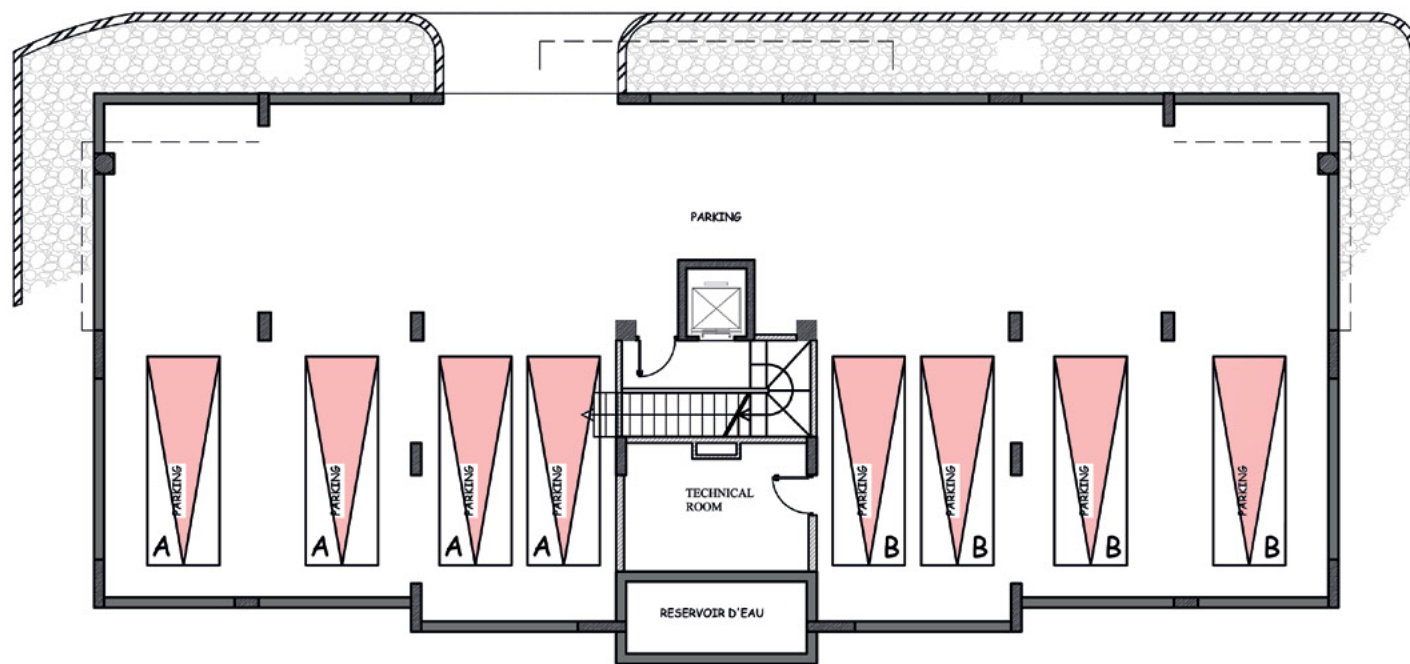
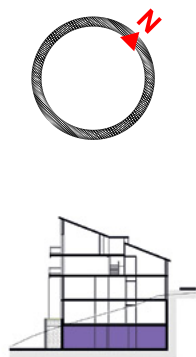
BLOCK C

NORTH EAST
PERSPECTIVE



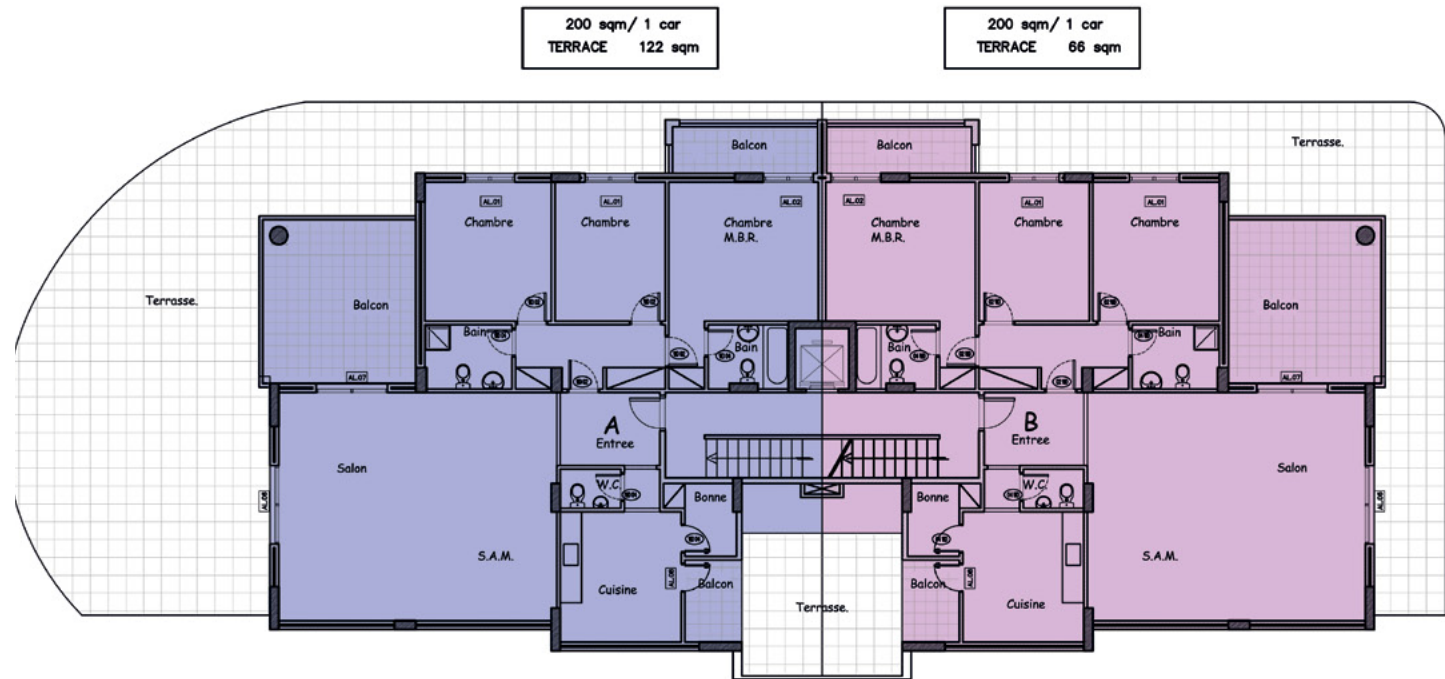
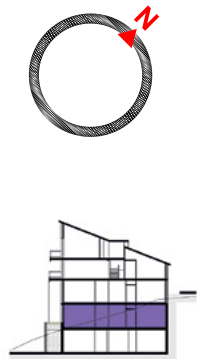
BLOCK B/C

SECOND BASEMENT



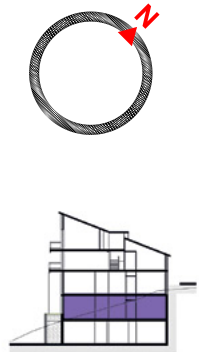
BLOCK B

FIRST BASEMENT



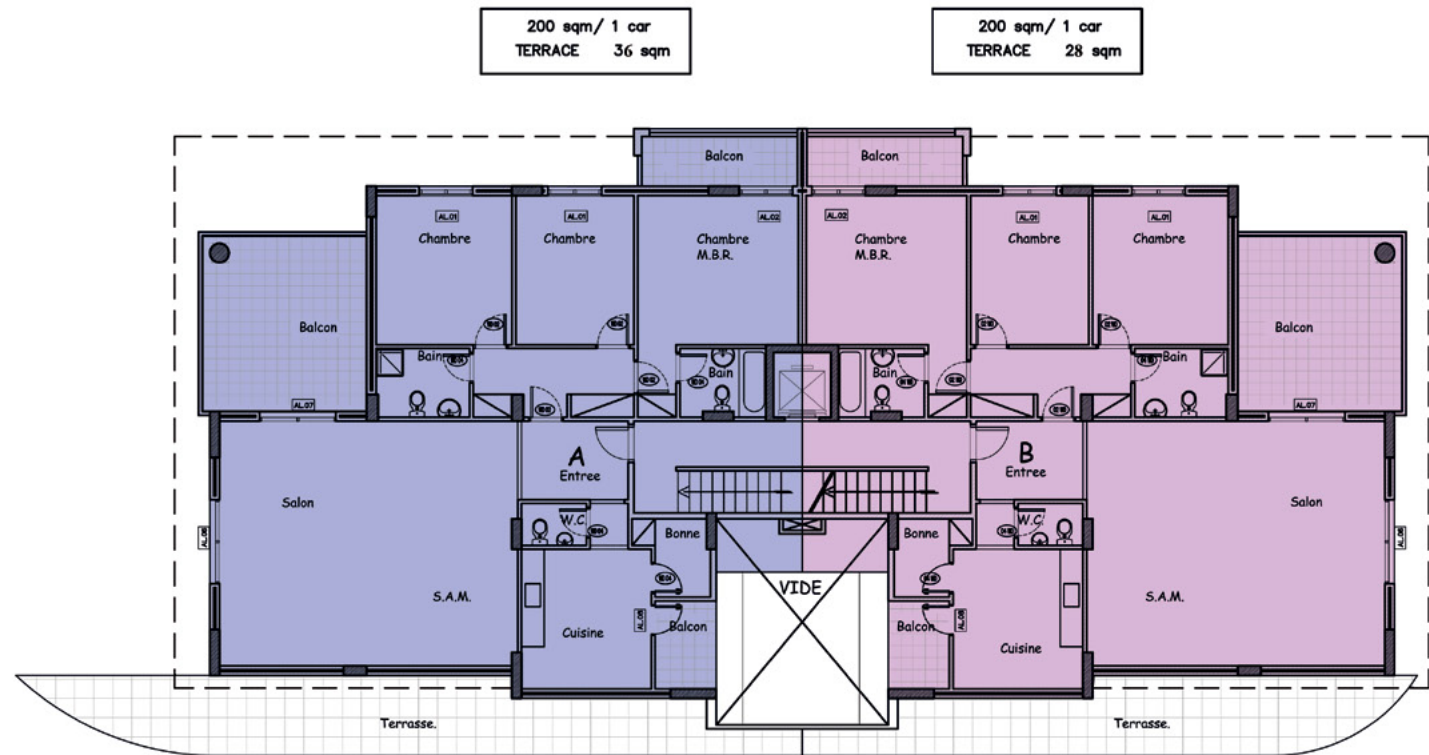
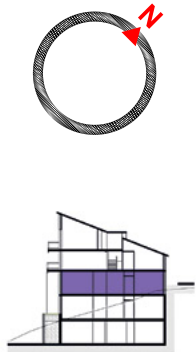
BLOCK C

FIRST BASEMENT



BLOCK B

GROUND FLOOR

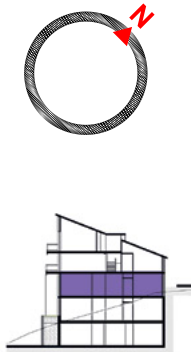


BLOCK C

GROUND FLOOR

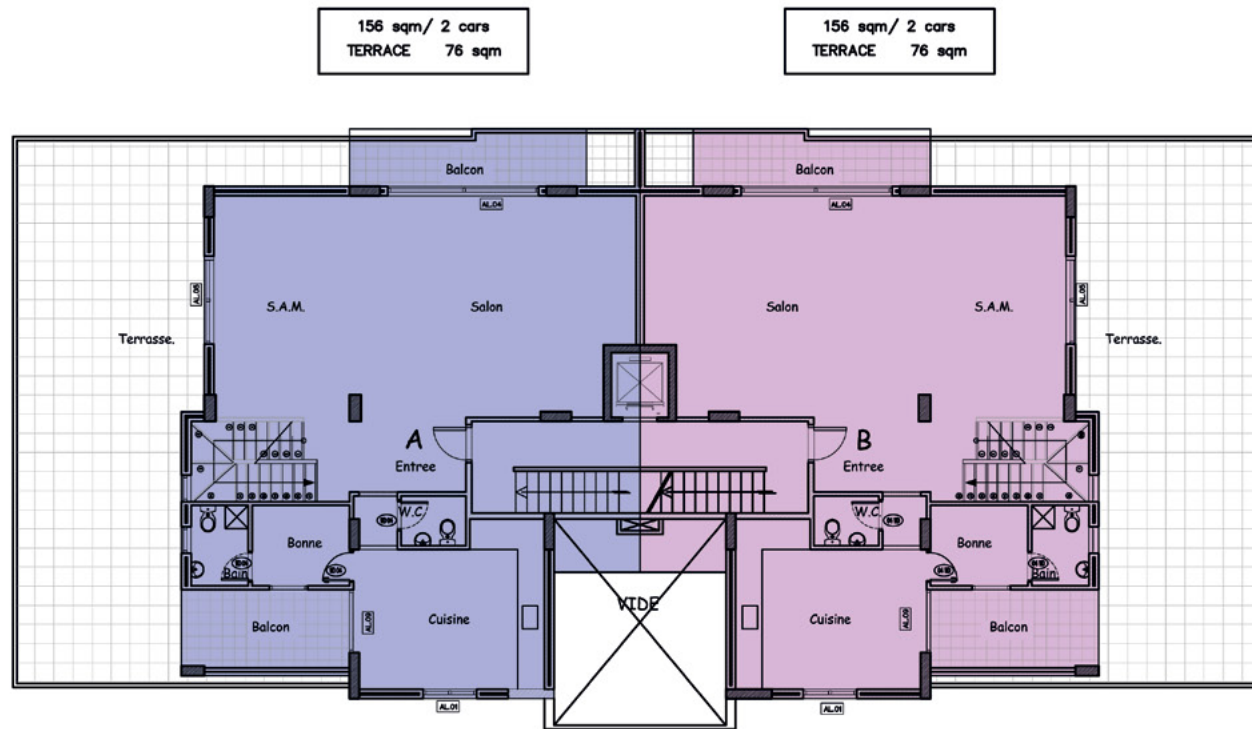
200 sqm / 1 car
TERRACE 28 sqm

200 sqm / 1 car
TERRACE 53 sqm



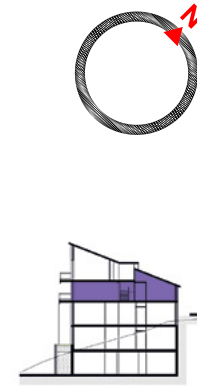
BLOCK B/C

FIRST FLOOR



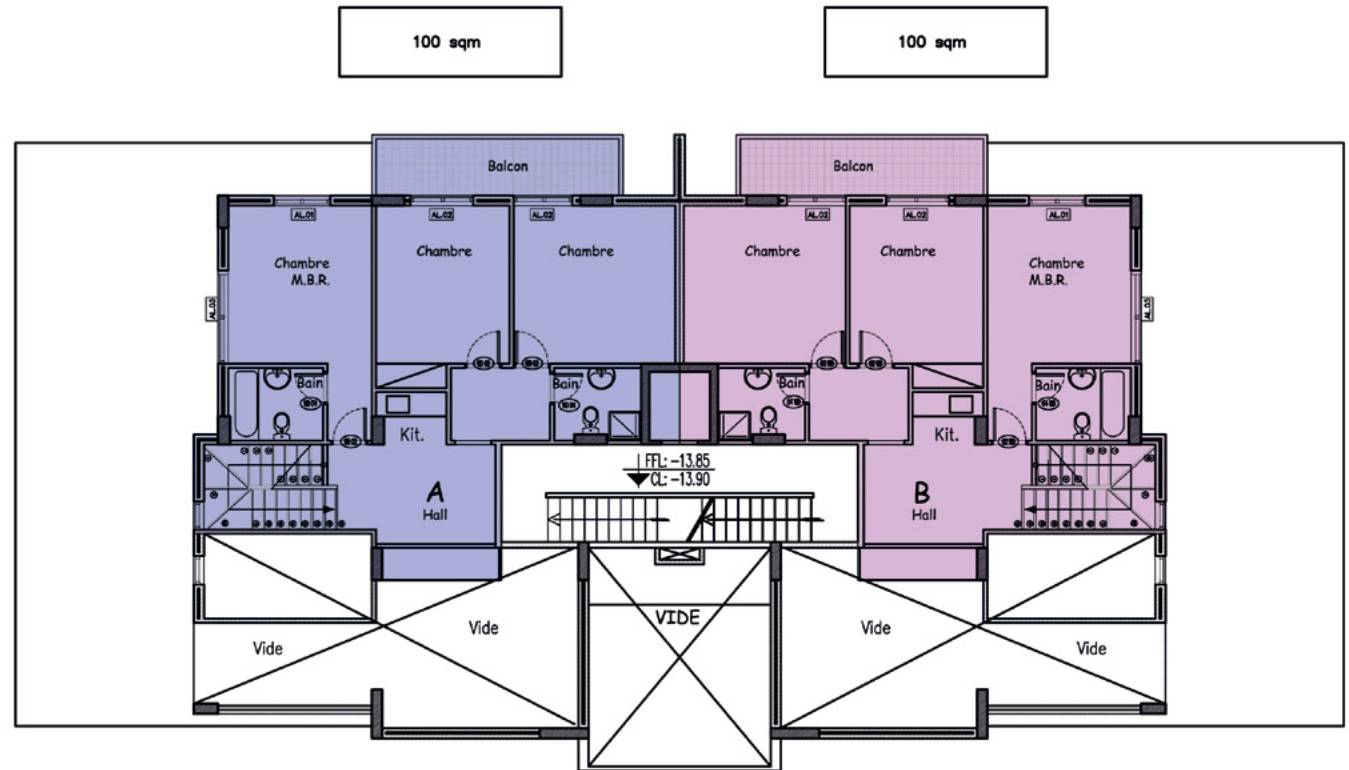
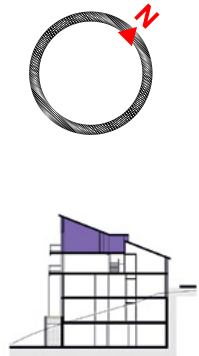
156 sqm / 2 cars
TERRACE 76 sqm

156 sqm / 2 cars
TERRACE 76 sqm



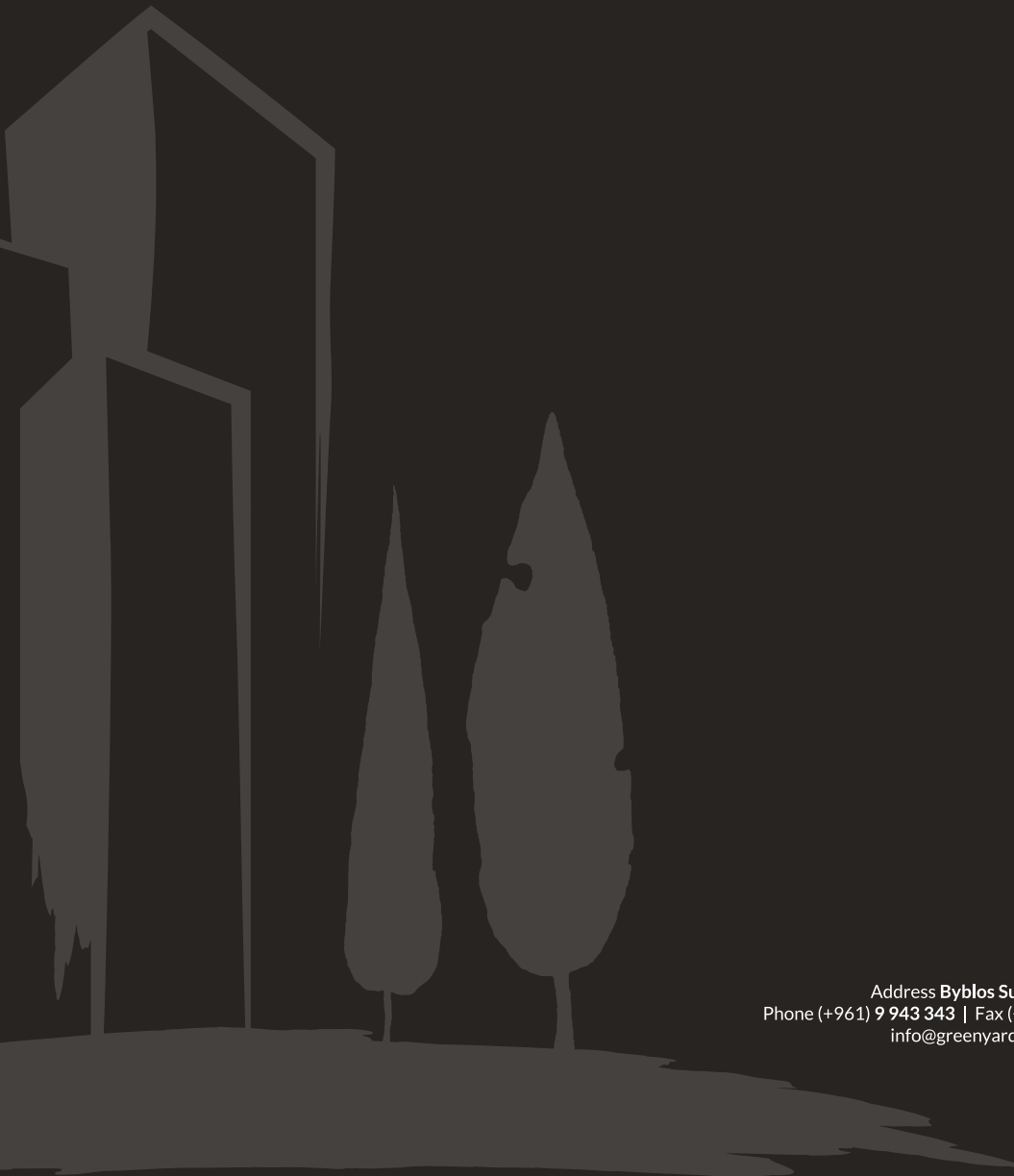
BLOCK B/C

DUPLEX





“
FOUNDED ON THE
PROMISE OF TRUST.
”



Address **Byblos Sun Building 3rd Floor, Byblos Main Entrance, Lebanon**
Phone (+961) 9 943 343 | Fax (+961) 9 943 443 | Mobile (+961) 71 988 088 | (+961) 71 988 288
info@greenyardproperties.com | www.greenyardproperties.com